

XProps® Frequently Asked Questions (FAQ)

1. [What are the software requirements for XProps?](#)
 2. [In which software programs can I use XProps?](#)
 3. [XProps does not work with my software from the above list \(question #2\). Why?](#)
 4. [What refrigerants are supported by XProps?](#)
 5. [XProps is not appearing in my Excel functions list. What should I do?](#)
 6. [I am receiving "This Excel add-in requires the Microsoft .NET Framework". What shall I do?](#)
-

1. What are the software requirements for XProps?

XProps 3.0 is compatible with the following operating systems:

- Microsoft Windows XP with SP3, 32-bit only
- Microsoft Windows 7.0, 32-bit and 64-bit
- Microsoft Windows 8.0/8.1, 32-bit and 64-bit
- Microsoft Windows 10, 32-bit and 64-bit
- Microsoft Windows Server 2008/2008 R2/2012/2012 R2, 32-bit and 64-bit

[Back to top](#) 

2. In which software programs can I use XProps?

- Microsoft® Excel 2003, 2007, 2010, 2013 and 2016
- Microsoft® Visual Basic®
- Matlab® Version 2006 or higher
- Engineering Equation Solver (EES)
- Mathcad Version 13.0 or higher
- Mathcad Prime 3.1
- LabView
- Microsoft .NET Platform (C#, VB.NET, Managed C++) with .NET Framework 2.0

[Back to top](#) 

3. XProps does not work with my software from the above list (question #2). Why?

In general, XProps was developed to work with the **32-bit** versions of the above software. Please refer to the below table for more information:

Application / Programming Platform	32-bit Support	64-bit Support
C#, VB.NET	✓	✗
C/C++	✓	✓
EES, Engineering Equation Solver	✓	✗
LabView	✓	✗
Matlab / Simulink	✓	✓
Microsoft Excel Versions 2003-2016	✓	✗
PTC Mathcad 15.0	✓	✗
PTC Mathcad Prime 3.1	✓	✗

[Back to top](#) ↑

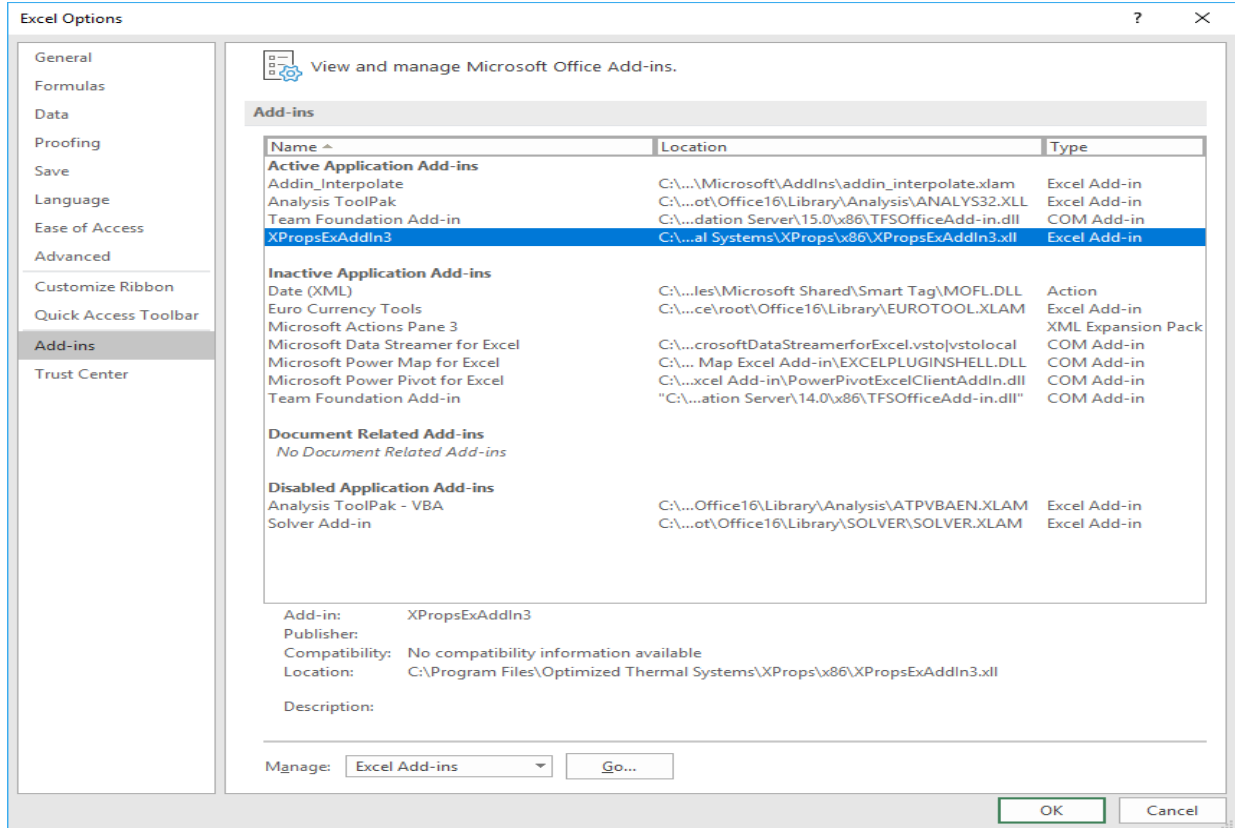
4. What refrigerants are supported by XProps?

Please refer to the help file for the full list of supported refrigerants. A full list is also available [here](#).

[Back to top](#) ↑

5. XProps is not appearing in my Excel functions list. What should I do?

Make sure that you are using the 32-bit version of Excel. Also, make sure that the XProps Excel Add-In (XPropsExAddIn3) is active by going to File > Options > Add-Ins and checking the Active Application Add-ins.

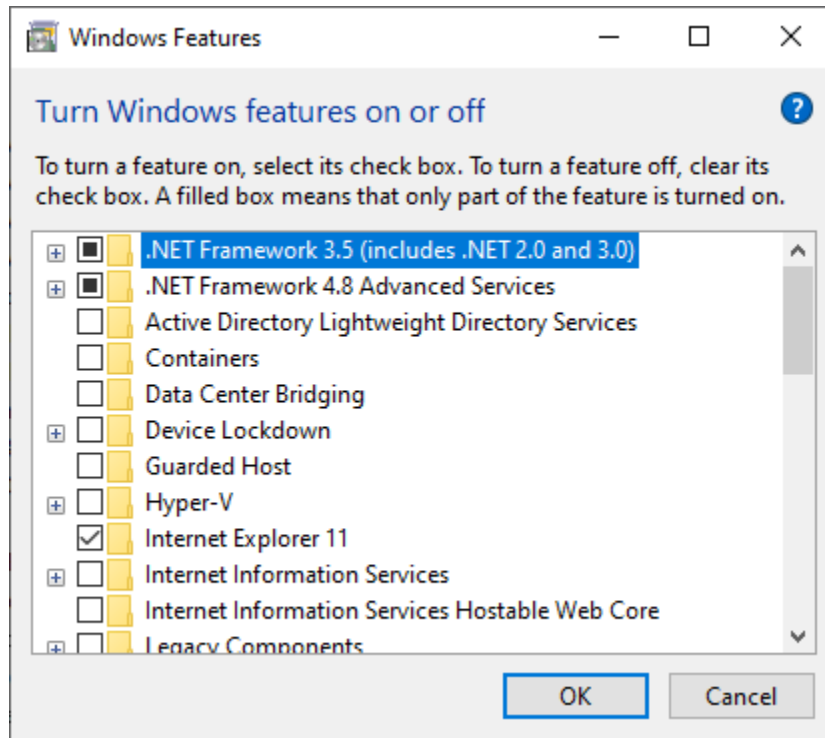


[Back to top](#)

6. I am receiving “This Excel add-in requires the Microsoft .NET Framework”. What shall I do?

You need to enable .NET Framework 2.0. Please go to *Control Panel > Programs and Features > Turn Windows features on or off*, check *.NET Framework 3.5 (includes .NET 2.0 and 3.0)* on the “Windows Features” tab and click OK. You can find more from the following link:

<https://www.groovypost.com/howto/enable-net-framework-2-windows-8/>



[Back to top](#) 